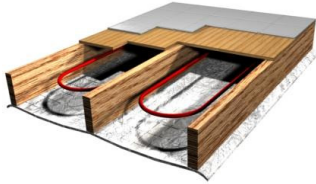
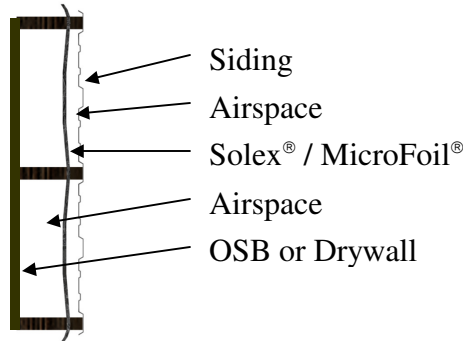


Reflective Foil Installation Guidelines

Installation of NOFP reflective insulation and radiant barrier is simple and convenient using a utility knife, seaming tape, safety glasses and standard safe installation procedures. The R-Value of reflective insulation is application and orientation specific. Please contact your NOFP representative for a table of system R-Values based on your installation method.



1/4" Thick	Air-to-Air System R-Value
Downwards (7/16" OSB / 2.75" Airspace / Solex / 2.75" Airspace / 1/2" Gypsum)	13.4
Downwards (7/16" OSB/ 3.5" Airspace / Solex)	10.9
Upwards (7/16" OSB/ 3.5" Airspace / Solex)	5.5
1/8" Thick	
Downwards (7/16" OSB / 2.75" Airspace / SolexLT / 2.75" Airspace / 1/2" Gypsum)	13.1
Downwards (7/16" OSB/ 3.5" Airspace / SolexLT)	10.4
Upwards (7/16" OSB/ 3.5" Airspace / SolexLT)	5.0



1/4" Thick	Air-to-Air System R-Value
Horizontal (Vinyl siding / 1" Airspace / Solex / 7/16" OSB)	5.8
Horizontal (Vinyl siding / 2.75" Airspace / Solex / 2.75" Airspace / 1/2" Gypsum)	9.5
1/8" Thick	
Horizontal (Vinyl siding / 1" Airspace / SolexLT / 7/16" OSB)	5.4
Horizontal (Vinyl siding / 2.75" Airspace / SolexLT / 2.75" Airspace / 1/2" Gypsum)	9.1

Installation Notes:

- Seaming of product should be made on a purlin, joist, girt or other solid surface to insure long-term integrity of the seam. Patch tape is to be used for repairing damage and not to hold up a suspended seam, including factory-made seams. Product should be trimmed back to an adjacent solid location and a new roll fastened and taped overlapping the previous roll.
- NOFP products are not intended for use in UV exposed applications or in non-enclosed buildings.

For Your Safety:

- Always check local building codes before installing NOFP products.
- Make sure work area is well ventilated and well lighted.
- Utilize the appropriate safety equipment warranted by the working environment
- Always use eye protection when using staple guns or screw guns.
- Any worn wiring should be replaced before installing NOFP Reflective Insulation.
- When working with NOFP Reflective Insulation products outdoors, wear sunglasses.
- Be careful when working with large pieces of NOFP Reflective Insulation on windy days.
- Always check the area you are insulating and make any needed repairs before beginning.
- Always exercise caution around electricity.
- Do not work in areas, such as the attic, when temps are too hot.

Please Note:

NOFP provides these Installation Instructions and 3-D renderings for the sole purpose of illustrating the correct location and relative position of NOFP Reflective Insulation products in specific building assemblies. The installation guidelines are only recommendations on the location of NOFP products. The correct construction methods and techniques are the responsibility of the installer or contractor. There are no claims on the part of NOFP, Inc. that these building assemblies meet building code requirements that can vary by region.